

## How to Use Anzio to Transfer a File from the Tag-n-Trak Server to your PC for CLOUD and In-House CentOS Servers

### Overview

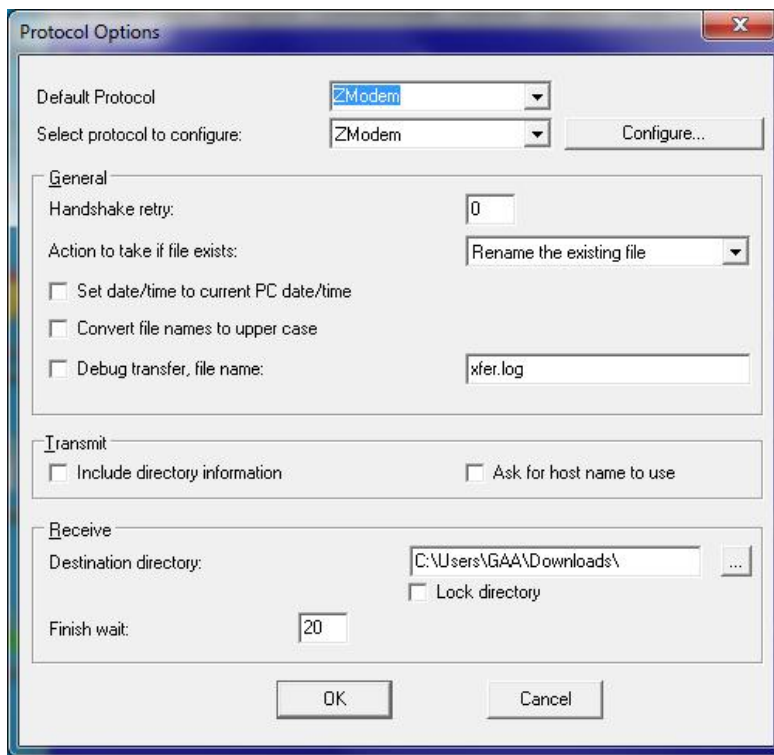
This document explains how to use Anzio file transfer to transfer a file from the Tag-n-Trak server to your PC. This document is for users on a **CLOUD or In-House CentOS Server**. If you are running Tag-n-Trak on a Unixware server, separate documentation is available.

In this document, transferring a “.csv” file created with Query will be used as an example. **This document assumes you have run the query and output the data to a “Disk file.”**

### Use Anzio File Transfer to Transfer File from Tag-n-Trak Server to PC

1. **If this is the first time you are transferring a file from the Tag-n-Trak Server to your PC**, you'll need to check your **“Receive Destination Directory”** under the Anzio Transfer options. The Receive Destination Directory is the folder on your PC where Anzio will copy the file. The steps for setting up a Receive Destination Directory are explained below. If you have already set up a Receive Destination Directory, skip this step and proceed to step 2.

- From any Tag-n-Trak Menu, Click on **“Transfer”** in the Anzio Status Bar.
- Click on **“Transfer Options.”** Your screen will look similar to what is shown below. The **“Receive Destination directory”** is the folder on your PC where Anzio will copy the file. Click on the **“...”** button to the right of the box to **Browse for Folder**. Select a **Folder** on your PC (such as “Downloads”) as your “Receive Destination directory” and click **OK**. Then Click **OK** to the **Protocol Options** box. Next, Click on **“File”** and **“Save Settings.”** **Proceed to Step 2.**



---

**How to Use Anzio to Transfer a File from the Tag-n-Trak Server to your PC  
for CLOUD and In-House CentOS Servers**

2. Press [F10] from any Tag-n-Trak menu for the Custom Menu Release 1.0

Custom Menu Release 1.28

1 Transfer File from Server to PC  
2 Transfer File from PC to Server  
3 Change Password  
4 Administration Menu  
5 Type-N-Count Utility Menu  
6 Printer Support Menu

X Exit

3. Select **#1 Transfer File from Server to PC**

4. The following screen displays:

This routine will allow you to transfer a file from the  
Server to a Windows PC using Z-modem file transfer.

Please select 9 if you don't want to do this.

1 - Continue (Send file as is)  
2 - Expand label file and send  
9 - Exit

Enter 1 to "Continue (Send file as is)" OR 2 "Expand label file and send." The most common response is 1 to "Continue (**Send file as is**)."

Option 2 to "Expand label file and send" is a newer feature and is used for special circumstances. Contact Mylee Customer Support for more information on using Option 2.

5. **Enter the filename** (such as **hangtags.csv**) in lower case letters at the following prompt:

Please enter the file name that you wish to copy to the Windows PC.

The file name should only contain numbers 0 through 9, letters a through z  
and period. A directory path is not required if the file resides in the  
/home/xxx/temp directory.

Please enter the file name or Q to quit:

**EXAMPLE:**

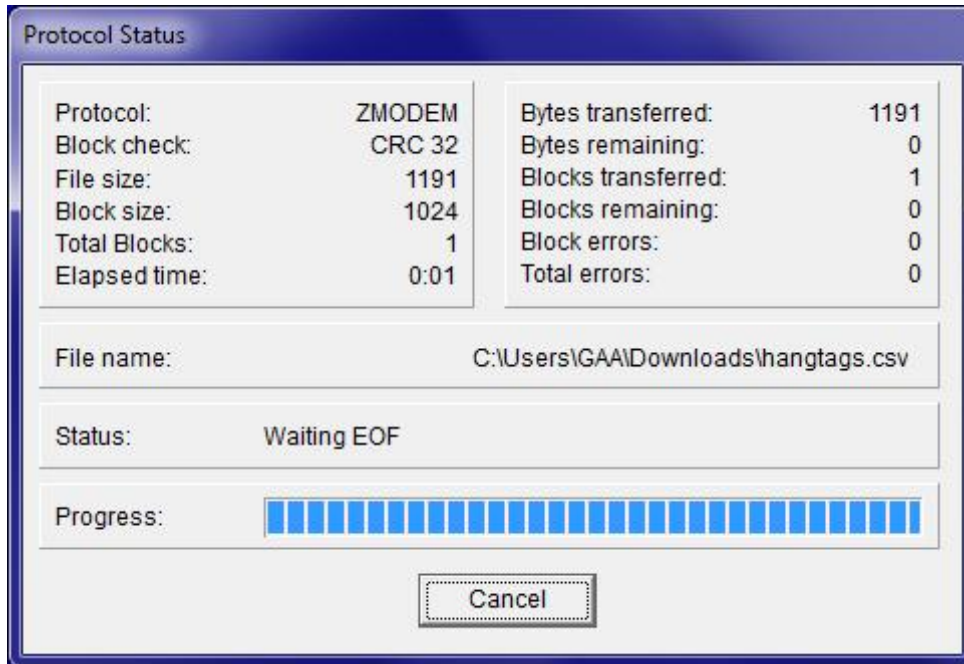
Please enter the file name or Q to quit: hangtags.csv ← *Must be lower case!*

Enter Q to Quit and not enter a file name.

Waiting to begin transfer process ....

**How to Use Anzio to Transfer a File from the Tag-n-Trak Server to your PC  
for CLOUD and In-House CentOS Servers**

6. As soon as you see the “Waiting to begin transfer process” message, click on **“Transfer”** in the **STATUS BAR** at the top of your screen to see a list of transfer options.
7. Click on **“Receive File.”**
8. The following **“Protocol Status”** box displays briefly (a few seconds) indicating the transfer status.



9. If the transfer is successful, you'll be prompted to **“Press Enter for menu...”** **If you do not get the “Press Enter for menu...” prompt, try again by repeating all of the steps in this document. If you are unable to successfully transfer the file, contact Mylee Customer Support for assistance.**
10. After pressing **Enter**, you'll be back on the “File Transfer Menu.” Select **X** to Exit from the File Transfer menu and then press Enter. Select **X** again to exit from the Custom Menu.
11. On your **PC**, the file you transferred should be in the folder you designated as the “Receive Destination Folder.” The file can be moved from this folder to a different folder on your PC as needed.

Note: If your transfer was successful but you do not find the file on your PC, go to Step 1 of this document and check the “Receive Destination Directory” under “Transfer Options” to be sure the appropriate folder has been selected for the destination.